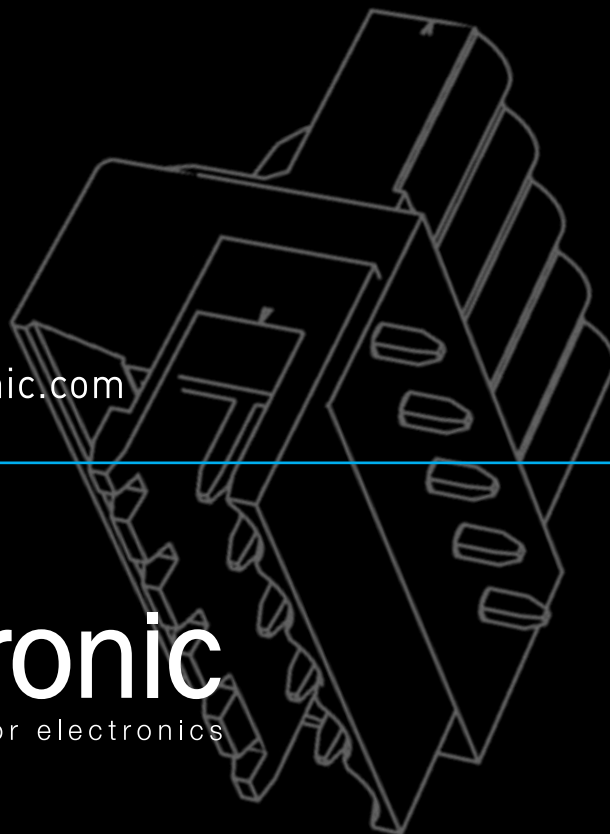

A WORLD OF ENCLOSURES

TERMINAL SHORT FOLDER



www.italtronic.com

italtronic
enclosures for electronics

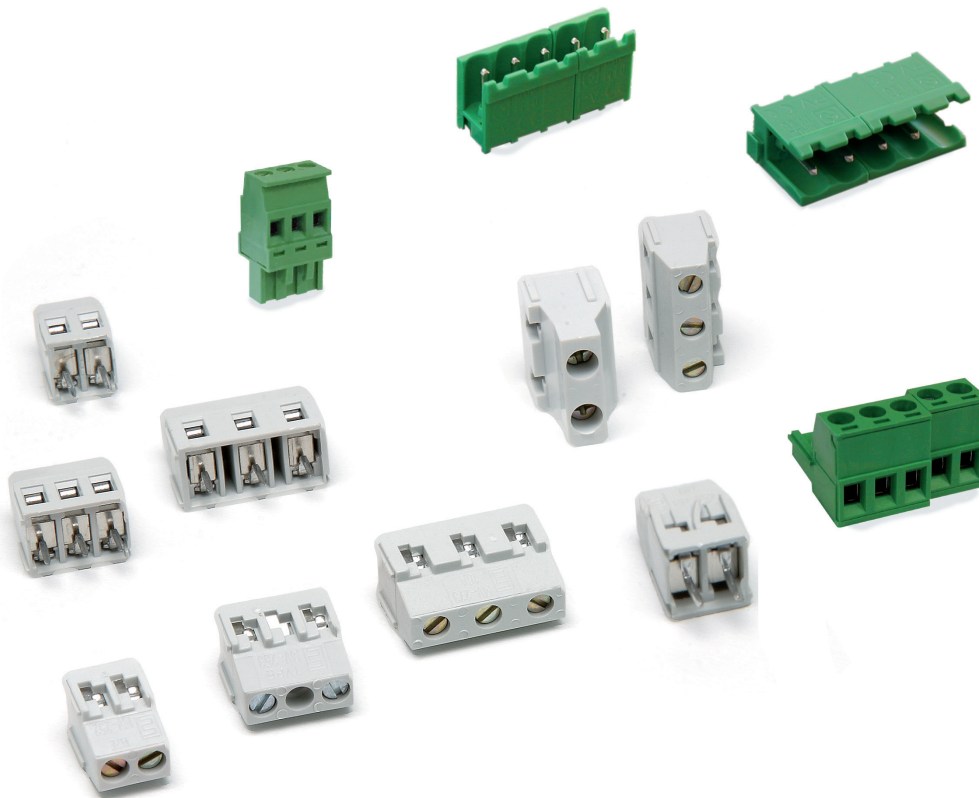


CARATTERISTICHE GENERALI

Selezione per ITALTRONIC

GENERAL FEATURES

Italtronic dedicated selection



TERMINAL

Morsetto componibile per circuito stampato

Materiale: Poliammide UL 94V-0 autoestinguente

CARATTERISTICHE

Italtronic ha selezionato dal mercato alcuni prodotti che completano perfettamente i contenitori di nostra produzione. Le morsettiere proposte sono elementi di connessione che si inseriscono nella fascia medio/alta della componentistica per circuito stampato attualmente in commercio. Esse sono del tipo ad accoppiamento a coda di rondine onde ottenere, se necessario, composizioni con un alto numero di poli. Il morsetto tipo a carrello permette un uniforme serraggio del cavo, senza sollecitare il pin saldato sul circuito stampato. Il terminale, in ottone stagnato, è provvisto di rigatura mordifilo per garantire la tenuta del cavo allo strappo. La vite M3, in acciaio zincato, è sottoposta ad un adeguato trattamento di cementazione, onde migliorare la coppia di serraggio. Il materiale plastico usato è di tipo autostinguente. La particolare attenzione riservata nella selezione dei fornitori permette di immettere sul mercato un prodotto perfettamente rispondente alle varie normative internazionali, garantendo gli utilizzatori nel processo applicativo.

TERMINAL

Connectable terminal block for printed circuit board

Material: Self-extinguishing Polyamide UL 94V-0

FEATURES

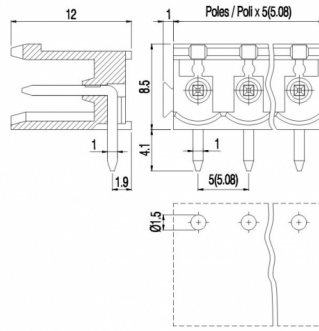
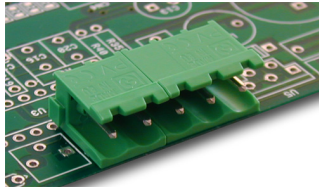
Italtronic has selected, in the market, some products which complete perfectly the enclosures of its own production. The proposed terminal blocks belong to the medium/high category of the printed circuit components in the market. The dove-tail type is used to obtain a composition with a high numbers of poles. The carriage type is used to obtain an equal fixing of the cable without stressing the soldered pins on the pcb. The finned brass pin is provided with a groove to grant wire tearing resistance. The M3 screw is in zinc plated steel and, due to a hardening process, becomes stronger when mounted. The plastic material is self-extinguishing. A special attention is given to the supplier's selection, obtaining, in this way, a product which corresponds to the several international standards and is reliable while used during the mounting process.

UTILIZZO DEI MORSETTI / USE OF THE TERMINAL BLOCKS

	INCABOX	INCABOX XT/XTS	MODULBOX	MODULBOX XTS/XT	RAILBOX
MV 25	-	-	•	•	-
MV 27	-	-	•	•	-
MV 46	-	-	•	•	-
MV 49	-	-	•	•	-
MV 1	•	-	-	-	-
MV 47	-	-	•	•	-
MV 10	-	-	•	•	-
PV/SH	•	•	•	•	•
5EH	-	-	-	-	•
5ESDA	-	-	-	-	•
5ES	-	-	-	-	•

PVxx-5,08-H-M

TERMINAL



GENERAL INFORMATION	
pitch:	5,08 mm
housing height:	8,50 mm
housing depth:	12 mm
dimensional class:	medium
wire section:	-
clamp opening size:	-
wire stripping:	-
operating temperature:	-40°C ÷ +130°C

ELECTRICAL CHARACTERISTICS	
current:	12A
voltage:	250V
impulse voltage:	4 kV

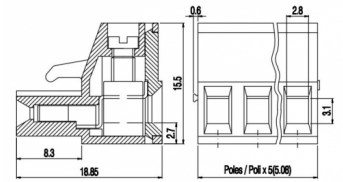
MECHANICAL CHARACTERISTICS	
screw:	M3
max. torque:	0.5 Nm / 4.5 in.lbs

APPROVALS DATA

	CSV	VDE	UL US
current:	EN 61984 12A	EN 61984 12A	UL 1059 12A factory / 12A field
voltage:	250V	250V	300V
FILE:	CA02.04178	40005779	E178356

MATERIALS	poles	P/N	codes
housing:	02	PV02-5,08-H-M	21.2202050
screw:	03	PV03-5,08-H-M	21.2203050
clamp/spring:			
terminal:			

SHxx-5,08-M



GENERAL INFORMATION	
pitch:	5,08 mm
housing height:	15,50 mm
housing depth:	18,85 mm
dimensional class:	medium
wire section:	2,5 mm ² / 14 AWG
clamp opening size:	2,8 x 3,1 mm
wire stripping:	max 8 mm
operating temperature:	-40°C ÷ +130°C

ELECTRICAL CHARACTERISTICS	
current:	16A
voltage:	250V
impulse voltage:	4 kV

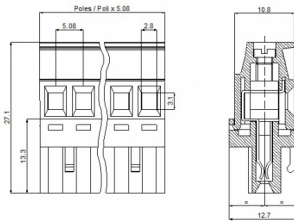
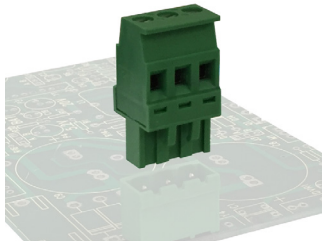
MECHANICAL CHARACTERISTICS	
screw:	M3
max. torque:	0.5 Nm / 4.5 in.lbs

APPROVALS DATA

	CSV	VDE	UL US
current:	EN 61984 16A	EN 61984 12A	UL 1059 12A factory / 12A field
voltage:	250V	250V	300V
wire section:	2,5mm ²	2,5mm ²	14:30AWG
torque:	0.5Nm	0.5Nm	4.5Lb-in
FILE:	CA02.04178	40005779	E178356

MATERIALS	poles	P/N	codes
housing:	02	SH02-5,08-M	21.2702050
screw:	03	SH03-5,08-M	21.2703050
clamp/spring:			
terminal:			

SVxx-5,08-F



GENERAL INFORMATION	
pitch:	5,08 mm
housing height:	27,60 mm
housing depth:	13,5 mm
dimensional class:	medium
wire section:	2,5 mm ² / 14 AWG
clamp opening size:	2,8 x 3,1 mm
wire stripping:	max 9 mm
operating temperature:	-40°C ÷ +130°C

ELECTRICAL CHARACTERISTICS	
current:	16A
voltage:	250V
impulse voltage:	4 kV

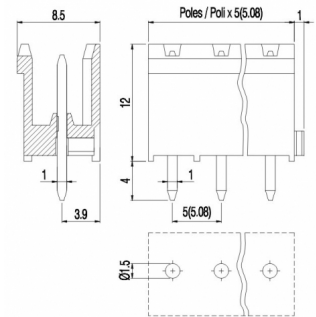
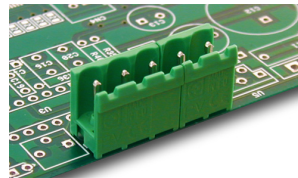
MECHANICAL CHARACTERISTICS	
screw:	M3
max. torque:	0.5 Nm / 4.5 in.lbs

APPROVALS DATA

	CSV	VDE	UL US
current:	EN 61984 16A	EN 61984 12A	UL 1059 12A factory / 12A field
voltage:	250V	250V	300V
wire section:	2,5mm ²	2,5mm ²	14:30AWG
torque:	0.5Nm	0.5Nm	4.5Lb-in
FILE:	CA02.04178	40005779	E178356

MATERIALS	poles	P/N	codes
housing:	02	SV02-5,08-F	21.3702050
screw:	03	SV03-5,08-F	21.3703050
clamp/spring:	04	SV04-5,08-F	21.3704050
terminal:	05	SV05-5,08-F	21.3705050
	06	SV06-5,08-F	21.3706050
	07	SV07-5,08-F	21.3707050
	08	SV08-5,08-F	21.3708050
	09	SV09-5,08-F	21.3709050

PVxx-5,08-V-M



GENERAL INFORMATION	
pitch:	5,08 mm
housing height:	12,00 mm
housing depth:	8,5 mm
dimensional class:	medium
wire section:	-
clamp opening size:	-
wire stripping:	-
operating temperature:	-40°C ÷ +130°C

ELECTRICAL CHARACTERISTICS	
current:	12A
voltage:	250V
impulse voltage:	4 kV

MECHANICAL CHARACTERISTICS	
screw:	M3
max. torque:	0.5 Nm / 4.5 in.lbs

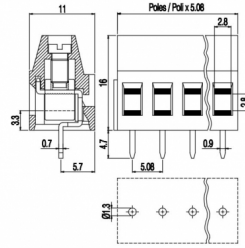
APPROVALS DATA

	CSV	VDE	UL US
current:	EN 61984 12A	EN 61984 12A	UL 1059 12A factory / 12A field
voltage:	250V	250V	300V
FILE:	CA02.04178	40005779	E178356

MATERIALS	poles	P/N	codes
housing:	02	PV02-5,08-V-M	21.2102050
screw:	03	PV03-5,08-V-M	21.2103050
clamp/spring:			
terminal:			

MV25x-5,08-V

TERMINAL



Version with antirotation pegs is available on 2 poles connections.
Disponibile per connessioni a 2 poli versioni con perni antirotazione.

GENERAL INFORMATION	
passo:	5,08 mm
altezza del corpo:	16,00 mm
profondità del corpo:	11 mm
classe dimensionale:	media
sezione conduttore:	2.5 mm ² / 14 AWG
diametro filo:	2.8 x 2.8 mm
spellatura cavo:	max 8 mm
temp. di esercizio:	-40°C ÷ +130°C

ELECTRICAL CHARACTERISTICS	
corrente:	16A
tensione:	450V
tensione di prova:	2.5 kVrms/60s

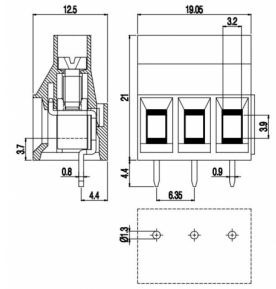
MECHANICAL CHARACTERISTICS	
vite:	M3
coppia massima:	0.5 Nm / 4.5 in.lbs

APPROVALS DATA

	CSV	VDE	UL US
corrente:	EN 60998-1 16A	EN 60998-1 16A	UL 1059 16A factory / 15A field
tensione:	450V	450V	300V
sezione filo conduttore:	2.5mm ²	2.5mm ²	14+30AWG
coppia:	0.5Nm	0.5Nm	4.5Lb-in
FILE:	EP149	40023956	E178356

MATERIALS	poles	P/N	codes
corpo isolante:	2	MV252-5,08-V	21.0102051
vite:	3	MV253-5,08-V	21.0103051
morsetto/molla:	4	MV254-5,08-V	21.0104051
terminale:	8	MV258-5,08-V	21.0108051

MV46x-6,35-V



GENERAL INFORMATION	
passo:	6,35 mm
altezza del corpo:	21,00 mm
profondità del corpo:	12,5 mm
classe dimensionale:	alta
sezione conduttore:	6.0 mm ² / 10 AWG
diametro filo:	3.2 x 3.9 mm
spellatura cavo:	max 9 mm
temp. di esercizio:	-40°C ÷ +130°C

ELECTRICAL CHARACTERISTICS	
corrente:	32A
tensione:	450V
tensione di prova:	2.5 kVrms/60s

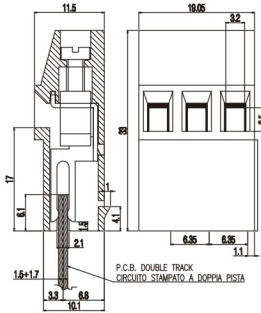
MECHANICAL CHARACTERISTICS	
vite:	M3
coppia massima:	0.8 Nm / 7.2 in.lbs

APPROVALS DATA

	CSV	VDE	UL US
corrente:	EN 60998-1 32A	EN 60998-1 25A	UL 1059 30A factory / 30A field
tensione:	450V	450V	300V
sezione filo conduttore:	6.0mm ²	4.0mm ²	10+30AWG
coppia:	0.8Nm	0.5Nm	7.2Lb-in
FILE:	EP150	40014734	E178356

MATERIALS	poles	P/N	codes
corpo isolante:	2	MV462-6,35-V	21.1502061
vite:	3	MV463-6,35-V	21.1503061
morsetto/molla:			
terminale:			

MVIx-6,35-V



GENERAL INFORMATION	
pitch:	6,35 mm
housing height:	33,00 mm
housing depth:	11,5 mm
dimensional class:	medium
wire section:	4.0 mm ² / 12 AWG
clamp opening size:	3.2 x 3.5 mm
wire stripping:	max 10 mm
operating temperature:	-40°C ÷ +130°C

ELECTRICAL CHARACTERISTICS	
current:	25A
voltage:	450V
test voltage:	2.5 kVrms/60s

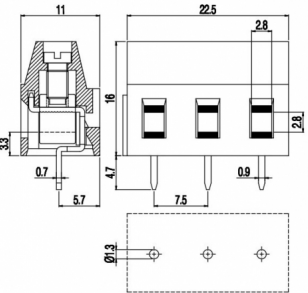
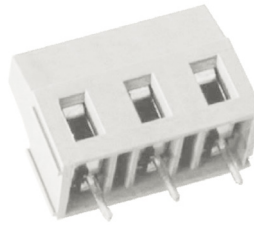
MECHANICAL CHARACTERISTICS	
screw:	M3
max. torque:	0.5 Nm / 4.5 in.lbs

APPROVALS DATA

	CSV	VDE	UL US
current:	-	-	UL 1059 25A factory / 20A field
voltage:	-	-	300V
wire section:	-	-	12+30AWG
torque:	-	-	4.5Lb-in
FILE:	-	-	E178356

MATERIALS	poles	P/N	codes
housing:	2	MVI2-6,35-V	21.1902062
screw:	3	MVI3-6,35-V	21.1903062
clamp/spring:			
terminal:			

MV27x-7,5-V



GENERAL INFORMATION	
pitch:	7,5 mm
housing height:	16,00 mm
housing depth:	11 mm
dimensional class:	medium
wire section:	2.5 mm ² / 14 AWG
clamp opening size:	2.8 x 2.8 mm
wire stripping:	max 8 mm
operating temperature:	-40°C ÷ +130°C

ELECTRICAL CHARACTERISTICS	
current:	16A
voltage:	750V
test voltage:	3 kVrms/60s

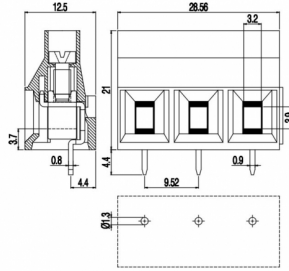
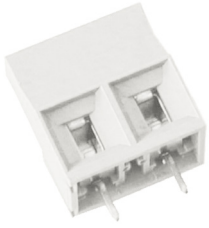
MECHANICAL CHARACTERISTICS	
screw:	M3
max. torque:	0.5 Nm / 4.5 in.lbs

APPROVALS DATA

	CSV	VDE	UL US
current:	EN 60998-1 16A	EN 60998-1 16A	UL 1059 16A factory / 15A field
voltage:	750V	750V	300V
wire section:	2.5mm ²	2.5mm ²	14+30AWG
torque:	0.5Nm	0.5Nm	4.5Lb-in
FILE:	EP149	40023956	E178356

MATERIALS	poles	P/N	codes
housing:	2	MV272-7,5-V	21.1302071
screw:	3	MV273-7,5-V	21.1303071
clamp/spring:			
terminal:			

MV49x-9,52-V



GENERAL INFORMATION

pitch:	9,52 mm
housing height:	21,00 mm
housing depth:	12,5 mm
dimensional class:	high
wire section:	6.0 mm ² / 10 AWG
clamp opening size:	3.2 x 3.9 mm
wire stripping:	max 9 mm
operating temperature:	-40°C ÷ +130°C

ELECTRICAL CHARACTERISTICS

current:	32A
voltage:	750V
test voltage:	3 kVrms/60s

MECHANICAL CHARACTERISTICS

screw:	M3
max. torque:	0.8 Nm / 7.2 in.lbs

APPROVALS DATA



EN 60998-1

current:	32A
voltage:	750V
wire section:	6.0mm ²
torque:	0.8Nm
FILE:	EP150



EN 60998-1

current:	25A
voltage:	750V
wire section:	4.0mm ²
torque:	0.5Nm
FILE:	40014734



UL 1059

current:	30A factory / 30A field
voltage:	600V
wire section:	10÷30AWG
torque:	7.2Lb-in
FILE:	E178356

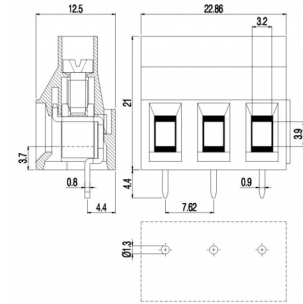
MATERIALS

housing:	PA - UL 94 V0
screw:	Galvanized steel
clamp/spring:	Nickel copper alloy

poles P/N codes

2	MV492-9,52-V	21.1702091
3	MV493-9,52-V	21.1703091

MV47x-7,62-V



GENERAL INFORMATION

pitch:	7,62 mm
housing height:	21,00 mm
housing depth:	12,5 mm
dimensional class:	high
wire section:	6.0 mm ² / 10 AWG
clamp opening size:	3.2 x 3.9 mm
wire stripping:	max 9 mm
operating temperature:	-40°C ÷ +130°C

ELECTRICAL CHARACTERISTICS

current:	32A
voltage:	750V
test voltage:	3 kVrms/60s

MECHANICAL CHARACTERISTICS

screw:	M3
max. torque:	0.8 Nm / 7.2 in.lbs

APPROVALS DATA



EN 60998-1

current:	32A
voltage:	750V
wire section:	6.0mm ²
torque:	0.8Nm
FILE:	EP150



EN 60998-1

current:	25A
voltage:	750V
wire section:	4.0mm ²
torque:	0.5Nm
FILE:	40014734



UL 1059

current:	30A factory / 30A field
voltage:	300V
wire section:	10÷30AWG
torque:	7.2Lb-in
FILE:	E178356

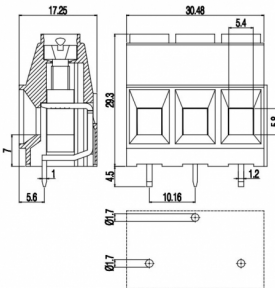
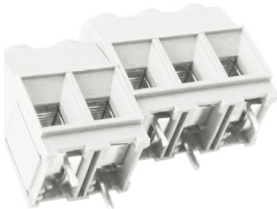
MATERIALS

housing:	PA - UL 94 V0
screw:	Galvanized steel
clamp/spring:	Nickel copper alloy
terminal:	Tin-plated copper alloy

poles P/N codes

2	MV472-7,62-V	21.1502071
3	MV473-7,62-V	21.1503071

MV10x-10,16-V-A



GENERAL INFORMATION

pitch:	10,16 mm
housing height:	29,30 mm
housing depth:	17,25 mm
dimensional class:	high
wire section:	10 mm ² / 8 AWG
clamp opening size:	5.4 x 5.8 mm
wire stripping:	max 15 mm
operating temperature:	-40°C ÷ +130°C

ELECTRICAL CHARACTERISTICS

current:	42A
voltage:	750V
test voltage:	3 kVrms/60s

MECHANICAL CHARACTERISTICS

screw:	M4
max. torque:	1.2 Nm / 10.8 in.lbs

APPROVALS DATA



-

current:	-
voltage:	-
wire section:	-
torque:	-
FILE:	-



EN 60998-1

current:	49A
voltage:	750V
wire section:	16mm ²
torque:	1.5Nm
FILE:	40034945



UL 1059

current:	42A factory / 42A field
voltage:	300V
wire section:	8÷30AWG
torque:	10.8Lb-in
FILE:	E178356

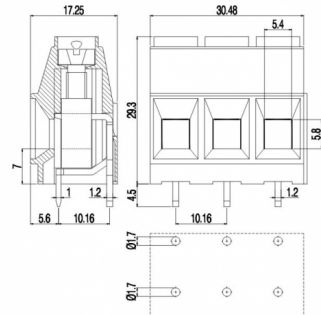
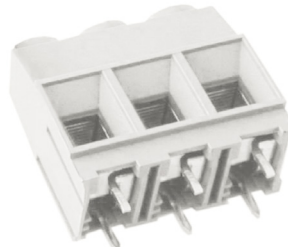
MATERIALS

housing:	PA - UL 94 V0
screw:	Galvanized steel
clamp/spring:	Nickel copper alloy
terminal:	Tin-plated copper alloy

poles P/N codes

2	MV102-10,16-V-A	21.0102101
3	MV103-10,16-V-A	21.0103101

MV10x-10,16-V



GENERAL INFORMATION

pitch:	10,16 mm
housing height:	29,20 mm
housing depth:	17,25 mm
dimensional class:	high
wire section:	10 mm ² / 8 AWG
clamp opening size:	5.4 x 5.8 mm
wire stripping:	max 15 mm
operating temperature:	-40°C ÷ +130°C

ELECTRICAL CHARACTERISTICS

current:	57A
voltage:	750V
test voltage:	3 kVrms/60s

MECHANICAL CHARACTERISTICS

screw:	M4M4
max. torque:	1.2 Nm / 10.8 in.lbs

APPROVALS DATA



-

current:	-
voltage:	-
wire section:	-
torque:	-
FILE:	-



EN 60998-1

current:	70A
voltage:	750V
wire section:	16mm ²
torque:	1.5Nm
FILE:	40034945



UL 1059

current:	57A factory / 57A field
voltage:	300V
wire section:	6÷30AWG
torque:	10.8Lb-in
FILE:	E178356

MATERIALS

housing:	PA - UL 94 V0
screw:	Galvanized steel
clamp/spring:	Nickel copper alloy
terminal:	Tin-plated copper alloy

poles P/N codes

1	MV101-10,16-V	21.5701051
2	MV102-10,16-V	21.5702051
3	MV103-10,16-V	21.5703051



Italtronic Srl

Corso Stati Uniti 17
35127 Padova - Italy
T. +39 049 8947150
F. +39 049 8947151
www.italtronic.com

